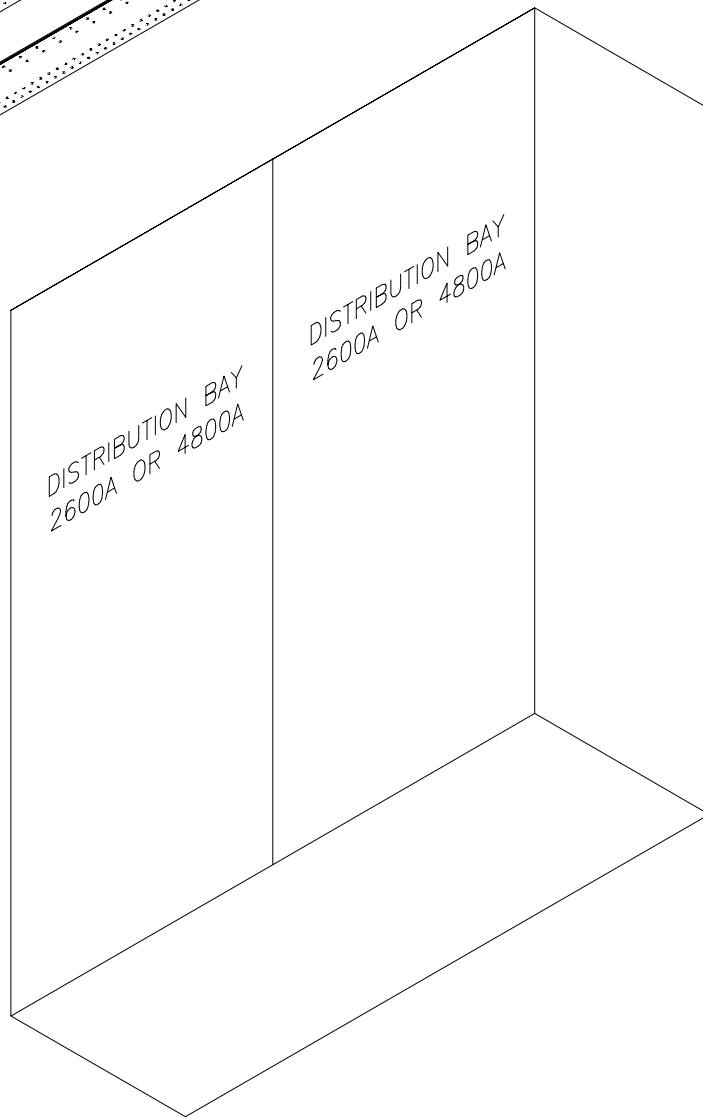
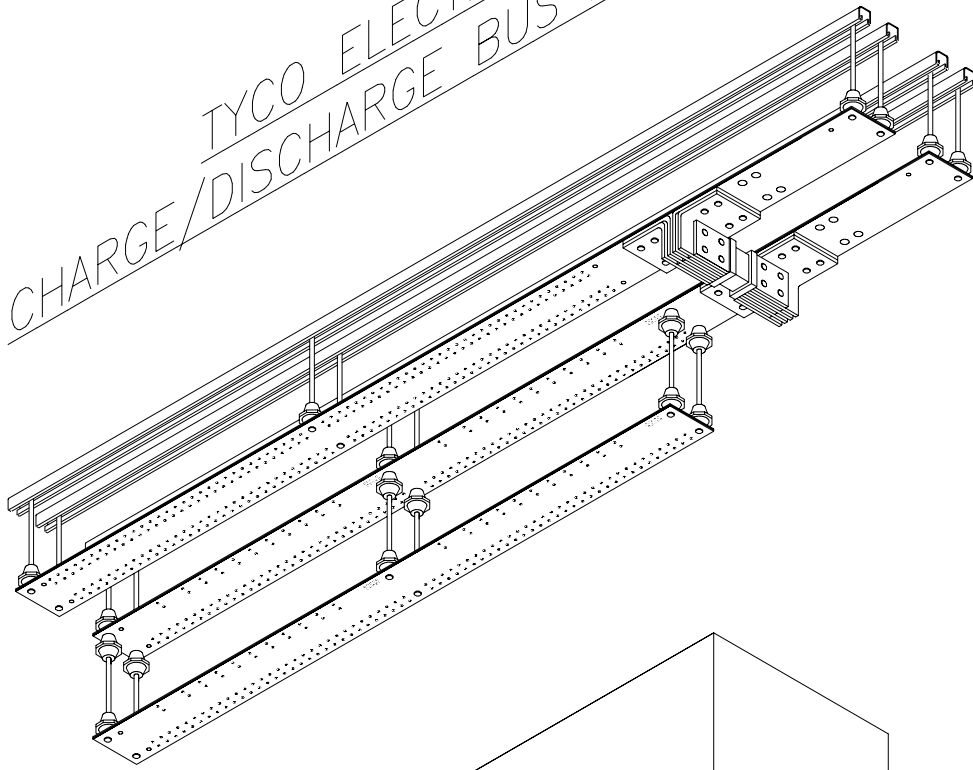
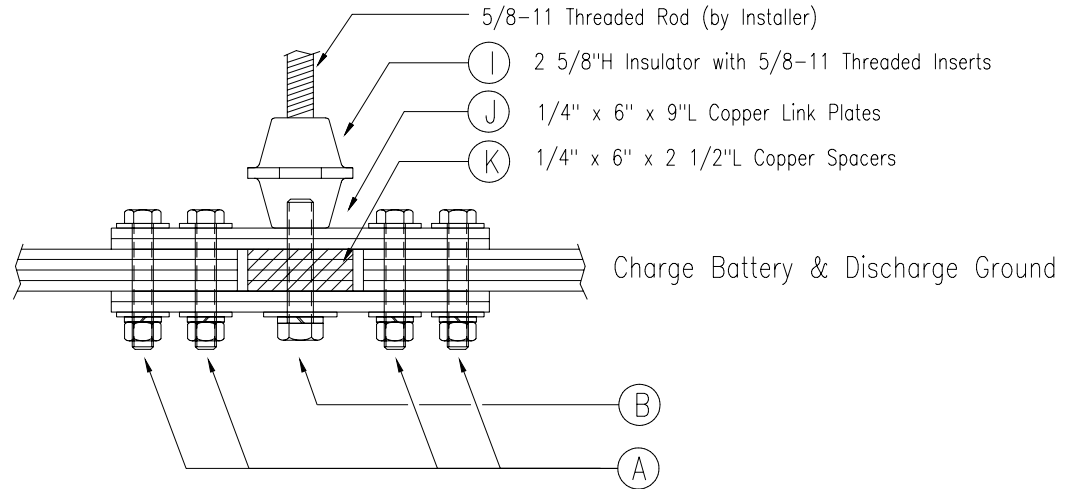
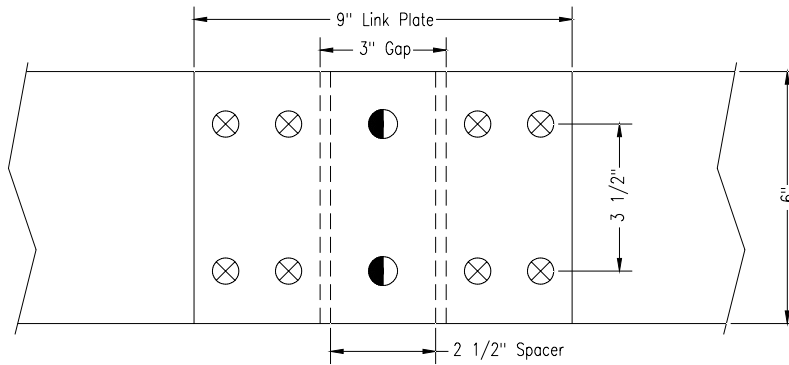


TYCO ELECTRONICS
CHARGE/DISCHARGE BUS ASSEMBLY



Top view of link connection

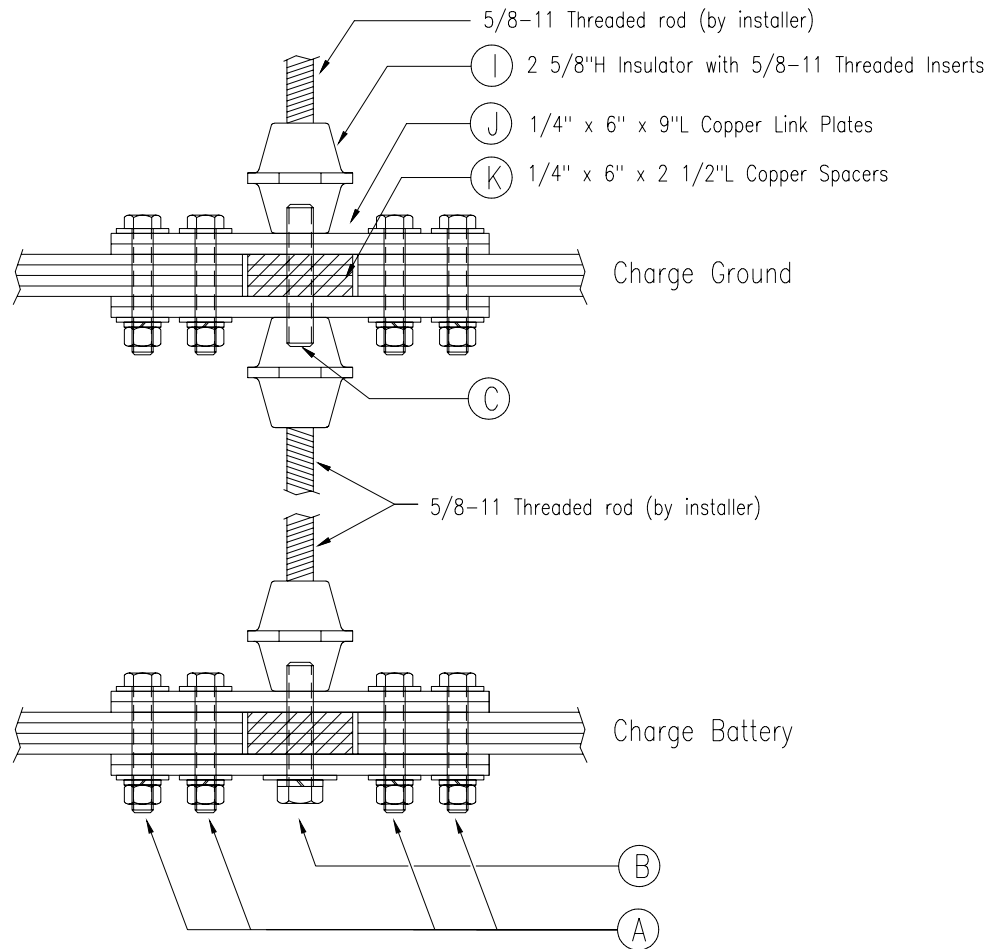


Item	Sym.	Description	Hole Size	Bolt Size	Qty.	Bolting Hardware/ea.
(A)	⊗	Link Plate Bolt	5/8"	1/2-13	8	Top: FW/ Bottom: FW, LW, Nut
(B)	◐	Center Link/Insulator Bolt	11/16"	5/8-11	2	FW, LW

FW= Flat Washer
LW= Lock Washer

Note: Refer to Component sheet for number of splice plates and spacers per link connection

FOR: tyco Electronics		Gus Berthold Electric Co. 1900 W. CARROLL AVENUE CHICAGO, ILLINOIS 60612 TELE. 312-243-5767 FAX. 312-243-5811	
COMCODE:	REVISION #	DRAWN: MSH	SCALE: 3"-1"
DESCRIPTION: Charge/Discharge Installation Drawing Link Connection		DATE: 03-03-03	DWG. SIZE: B
			DRAWING NO. C/D-1

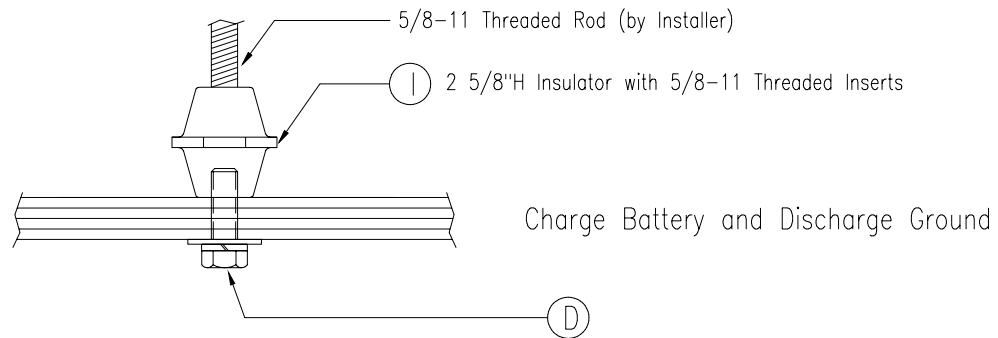
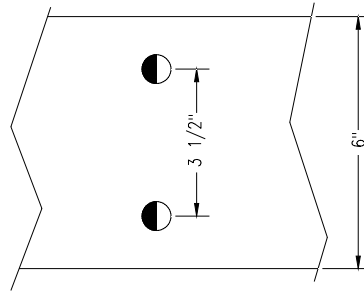


Item	Sym.	Description	Hole Size	Bolt Size	# Reqd./ea.	Bolting Hardware/ea.
(A)	⊗	Link Plate Bolt	5/8"	1/2-13	16	Top: FW/ Bottom: FW, LW, Nut
(B)	●	Center Link/Insulator Bolt	11/16"	5/8-11	2	FW, LW
(C)	●	Link Threaded Rod Stud	11/16"	N/A	2	None

FW= Flat Washer
LW= Lock Washer

Note: Refer to Component sheet for number of splice plates and spacers per link connection

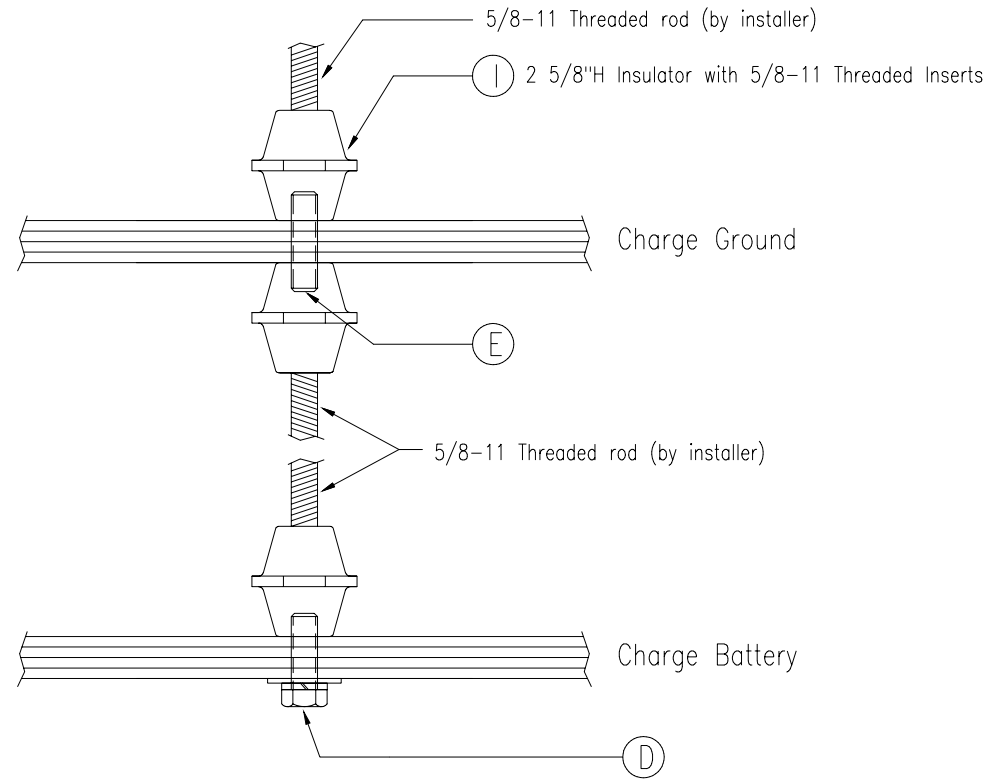
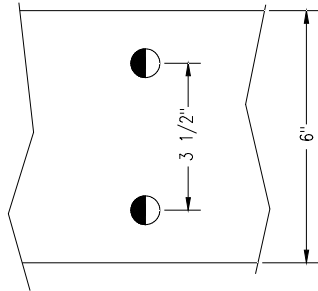
FOR:		tyco Electronics		Gus Berthold Electric Co. 1900 W. CARROLL AVENUE CHICAGO, ILLINOIS 60612 TELE. 312-243-5767 FAX. 312-243-5811	
COMCODE:	REVISION #	DRAWN: MSH	SCALE: 3"-1"	DRAWING NO.	
DESCRIPTION: Charge/Discharge Installation Drawing Link Connection		DATE: 03-03-03	DWG. SIZE: B	C/D-2	



Item	Sym.	Description	Hole Size	Bolt Size	# Reqd./ea.	Bolting Hardware/ea.
(D)	●	Insulator Bolt	11/16"	5/8-11	2	FW, LW

FW= Flat Washer
LW= Lock Washer

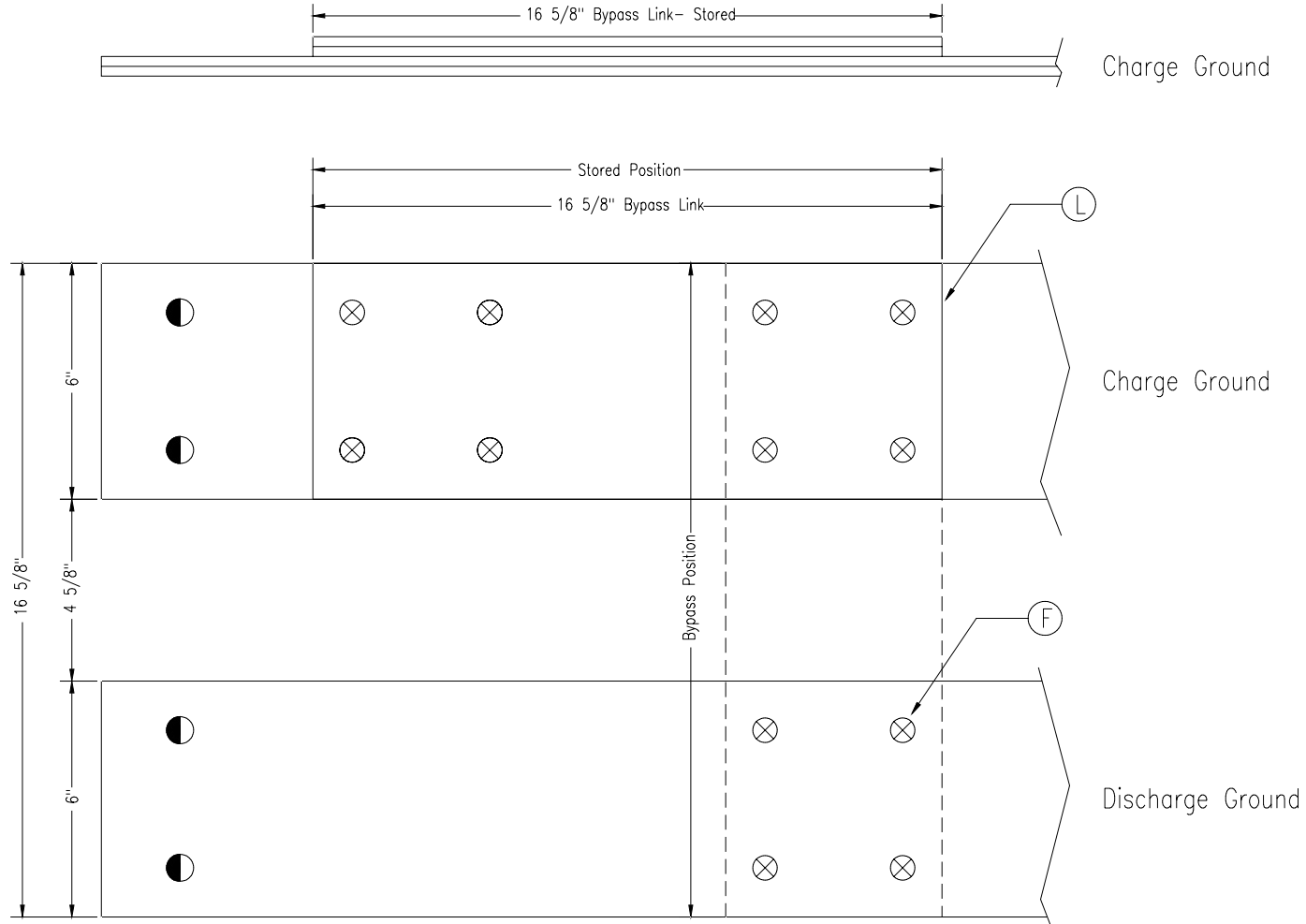
FOR:		tyco Electronics		Gus Berthold Electric Co. 1900 W. CARROLL AVENUE CHICAGO, ILLINOIS 60612	
COMCODE:	REVISION #	TELE. 312-243-5767		FAX. 312-243-5811	
DESCRIPTION: Charge/Discharge Installation Drawing Insulator Connection		DRAWN: MSH	SCALE: 3"-1"	DRAWING NO.	
DATE: 03-03-03	DWG. SIZE: B	C/D-3			



Item	Sym.	Description	Hole Size	Bolt Size	# Reqd./ea.	Bolting Hardware/ea.
(D)	●	Insulator Bolt	11/16"	5/8-11	2	FW, LW
(E)	●	Threaded Rod Stud	11/16"	5/8-11	2	None

FW= Flat Washer
LW= Lock Washer

FOR: tyco Electronics		Gus Berthold Electric Co. 1900 W. CARROLL AVENUE CHICAGO, ILLINOIS 60612 TELE. 312-243-5767 FAX. 312-243-5811	
COMCODE:	REVISION #	DRAWN: MSH	SCALE: 3"-1"
DESCRIPTION: Charge/Discharge Installation Drawing Dual Tier Insulator Connection		DATE: 03-03-03	DWG. SIZE: B
		DRAWING NO. C/D-4	



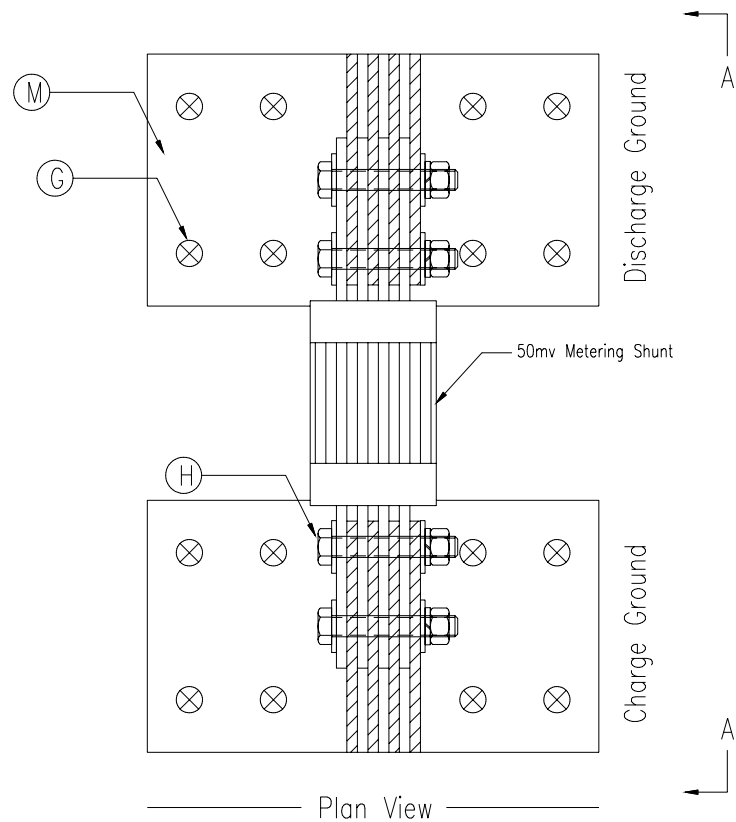
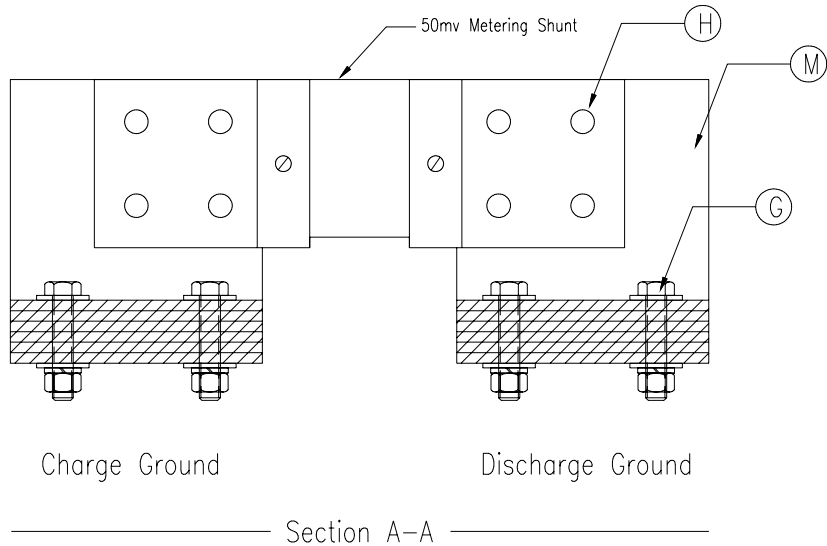
Item	Sym.	Description	Hole Size	Bolt Size	# Reqd./ea.	Bolting Hardware/ea.
(F)	⊗	Shunt Bypass Bolts	5/8"	1/2-13	8	Top: FW, Bottom: FW, LW, Nut

FW= Flat Washer
LW= Lock Washer

Note: Refer to Inventory sheet for number of Shunt Bypass Links

FOR: tyco Electronics	
COMCODE:	REVISION #
DESCRIPTION: Charge/Discharge Installation Drawing Shunt Bypass Connection Detail	

Gus Berthold Electric Co. 1900 W. CARROLL AVENUE CHICAGO, ILLINOIS 60612 TELE. 312-243-5767 FAX. 312-243-5811		
DRAWN: MSH	SCALE: 3"=1'	DRAWING NO.
DATE: 03-03-03	DWG. SIZE: B	C/D-5



Item	Sym.	Description	Hole Size	Bolt Size	# Reqd./ea.	Bolting Hardware/ea.
(G)	⊗	Shunt Bolts "G"	5/8"	1/2-13	16	Top: FW, Bottom: FW, LW, Nut
(H)	○	Shunt Bolts "H"	1/2"	*3/8-16	8	Top: FW, Bottom: FW, LW, Nut
(H)	○	Shunt Bolts "H"	5/8"	**1/2-13	8	Top: FW, Bottom: FW, LW, Nut

*3/8-16 Bolts utilized for 2500A-5000A Shunts
 **1/2-13 Bolts utilized for 6000A-10,000A Shunts

Note: Refer to Component Sheet for number of laminations for Shunt detail

FW= Flat Washer
 LW= Lock Washer

FOR: tyco Electronics		Gus Berthold Electric Co. 1900 W. CARROLL AVENUE CHICAGO, ILLINOIS 60612	
COMCODE:	REVISION #	TELE. 312-243-5767 FAX. 312-243-5811	
DESCRIPTION: Charge/Discharge Installation Drawing Metering Shunt Connection Detail		DRAWN: MSH	SCALE: 3"-1"
		DATE: 03-03-03	DWG. SIZE: B
		DRAWING NO. C/D-6	