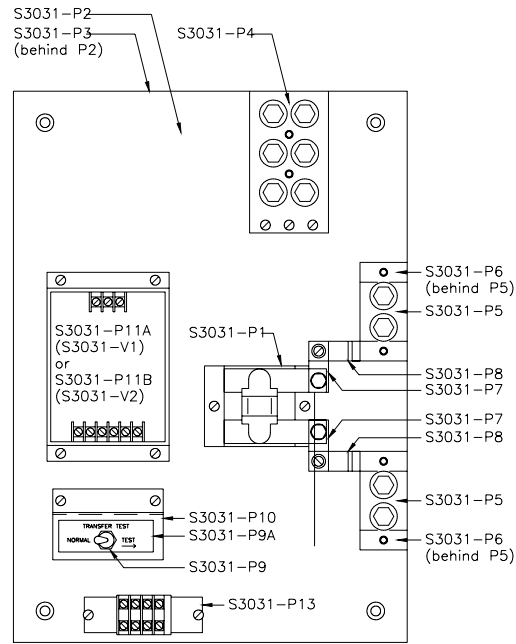


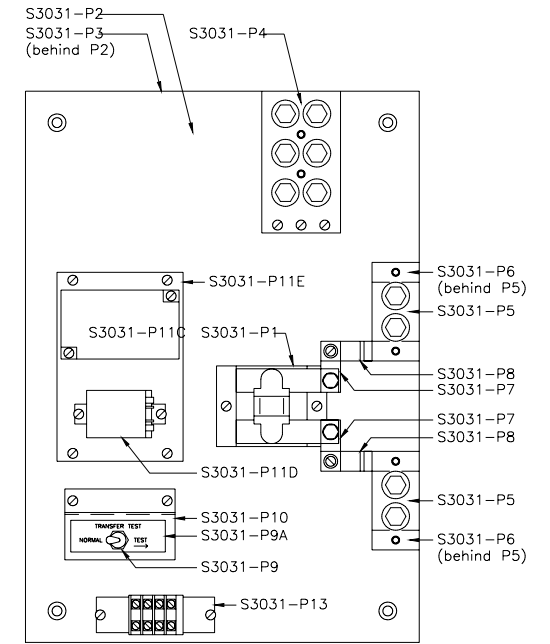
### S3031 Parts List

Part No.	Description	Dwg. No.	S3031-V1	S3031-V2	S3031-V3
S3031-P1	Contactora, Joslyn-Clark Cat. No. 7701-1000-63		1	1	1
S3031-P2	Panel	S3031-3	1	1	1
S3031-P3	Barrier	S3031-3	1	1	1
S3031-P4	Ground Bus	S3031-4	1	1	1
S3031-P5	Line/Load Terminal	S3031-4	2	2	2
S3031-P6	Spacer-Line/Load Terminal	S3031-4	2	2	2
S3031-P7	Bus Link	S3031-4	2	2	2
S3031-P8	Zee Bus	S3031-4	2	2	2
S3031-P9	Test Switch - Honeywell INT1-3 (95F5209)		1	1	1
S3031-P9A	Test Switch Nameplate	S3031-4	1	1	1
S3031-P10	Test Switch Bracket	S3031-4	1	1	1
S3031-P11A	Voltage Relay, 208V - Time Mark B2644		1		
S3031-P11B	Voltage Relay, 480V - Time Mark C2644			1	
S3031-P11C	Voltage Relay, 120/240V, 1Ph - Time Mark 160B240				1
S3031-P11D	Auxillary Relay "R" - P&B KUP11D55-48				1
S3031-P11E	Mounting base for 11C and 11D	S3031-4			1
S3031-P12	Diode D1 & D2 - 1N5404		1	1	2
S3031-P13	Terminal Block - Buchanan #		1	1	1
S3031-X1	S3031-V1 and S3031-V2 Schematic Diagram	S3031-X1	1	1	
S3031-X2	S3031-V1 and S3031-V2 Instalation Instructions	S3031-X2	1	1	
S3031-X4	S3031-V3 Schematic Diagram	S3031-X4			1
S3031-X5	S3031-V3 Instalation Instructions	S3031-X5			1
	3/8-16 HHMS (GR5) w/SAE FW and split LW		10	10	10
	1/4" SAE FW		4	4	4

Quantity  
Required



S-3031-V1 & -V2  
Component Location



S-3031-V3  
Component Location

FOR:		<b>tyco</b> <b>Electronics</b>		Gus Berthold Electric Co. 1900 W. CARROLL AVENUE CHICAGO, ILLINOIS 60612	
COMCODE:		REVISION #		TELE. 312-243-5767 FAX. 312-243-5811	
DESCRIPTION:		S3031 Emergency Lighting Controller Parts List		DRAWN: MSH SCALE: NONE DRAWING NO.	
DATE: 03-03-03		DWG. SIZE: B		S3031-P1	